



EASTMAN ROBIN



Please read completely before attempting to operate your **Robin Cutter**.

From the library of: Diamond Needle Corp

⚠ WARNING

This machine is equipped with a very sharp knife. Keep hands, arms, and hair away from the knife area at all times.

Misuse of this machine or failure to follow all safety instructions on this machine and in the instruction manual may result in serious personal injuries.

Instruction Manual and Parts List

Eastman®

Over a Century of Cutting Expertise

779 Washington St., Buffalo, N.Y. 14203-1396 U.S.A. • (716)856-2200 • Fax (716)856-1140 or (716)856-2068
Manufacturers of Eastman Cloth Cutting and Cloth Spreading Machines

Website: www.EastmanCuts.com

Table of Contents

Safety Information	3
General Safety Precautions	3
Overview	4
Maintenance	4
Knife Replacement	4
Shear Plate Replacement	5
Knife Sharpening and Sharpener Replacement	5
Lubrication	5
Motor Brush Replacement	5
Switch Replacement	5
Illustrated Parts List	6
Attachment Plug	8

Limited Warranty. Eastman warrants to the buyer that the machine shall be free from defects in materials or workmanship for a period of 180 days commencing on the date of invoice. Any goods or parts claimed by the buyer to be defective must be returned to Eastman, freight charges prepaid, within the 180-day warranty period. If Eastman determines that the goods or parts are defective in materials or workmanship, Eastman's sole obligation under this warranty shall be, at Eastman's sole option, to repair or replace the defective goods or parts or to provide to the buyer a credit equal to the portion of the purchase price allocable to the defective goods or parts. This warranty shall not apply if defects are caused by product misuse or neglect, if the machine has been altered or modified by the buyer, or if other than genuine Eastman belts, emery wheels, knives or parts are used in the machine. THIS WARRANTY IS THE ONLY WARRANTY APPLICABLE TO THIS PURCHASE. SELLER DISCLAIMS ALL OTHER WARRANTIES, EXPRESS OR IMPLIED, INCLUDING, BUT NOT LIMITED TO, THE IMPLIED WARRANTIES OF MERCHANTABILITY AND FITNESS FOR A PARTICULAR PURPOSE.

Limitation of Liability. Eastman's liability to the buyer, and the buyer's remedies from Eastman, whether in contract, negligence, tort, under any warranty or otherwise, shall be limited to the remedies provided in the foregoing Limited Warranty. In no event shall Eastman have any responsibility or liability to the buyer for (a) any special, indirect, incidental, or consequential damages, including, but not limited to, loss of use, revenue, or profit, even if Eastman has been advised of the possibility of such damages, or (b) any claim against the buyer by any third party. The price stated for the product sold is a consideration for limiting Eastman's liability.

Safety Information

Throughout this manual, safety information is presented by use of the terms *Warning*, *Caution*, and *Note*. These terms have the following meanings:

WARNING

A warning contains critical information regarding potential safety hazards that can occur during proper use or misuse of the machine. Failure to follow these procedures may result in serious personal injury to the user.

CAUTION

A caution contains instructions for the use or maintenance of the machine. Failure to follow these procedures may result in damage to the machine.

Safety and Indemnification

During the life of the machine, the purchaser agrees to provide to all machine users (including its own employees and independent contractors) all relevant safety information, including warning labels and instruction manuals. The purchaser also agrees to maintain the safety features and working condition of the machine, and to adequately train all users in the safe use and maintenance of the machine. The purchaser agrees to defend, protect, indemnify, and hold Eastman Machine Company harmless from and against all claims, losses, expenses, damages, and liabilities to the extent that they have been caused by the purchaser's failure to comply with the terms and instructions of this manual.

General Safety Precautions

WARNING

- This machine is equipped with a very sharp and dangerous knife. Keep hands, arms, and hair away from the knife area at all times. When the machine is not in use, keep the knife guard lowered at all times. Safety glasses and appropriate clothing may prevent serious personal injuries.
- Disconnect the power and air supply from the machine when it is not in use or during routine maintenance, including lubrication.
- The purchaser must instruct all operators in the proper use of the machine according to the instructions on the machine and in this manual. This training must include instruction on the potential safety hazards arising from the use or misuse of the machine. In addition to such training, the purchaser should provide written work instructions as necessary to ensure correct use of the machine for specific cutting applications.
- The purchaser must provide appropriate safety measures and equipment as recommended in this manual. Observe all statutory requirements concerning the use of hazardous machinery that apply to your location.
- Do not modify this machine or disable safety features. Unau-

thorized modification may result in serious personal injuries to the user. Electrical connections to this machine must be made by a qualified electrician familiar with applicable codes and regulations. To prevent electrocution, a ground lead must be connected to terminal "E" on the attachment plug.

- This machine may be equipped with a remote start interface. Misuse of this machine or use of this machine as part of another machine may result in serious personal injuries to the user.
- Safety labels must be kept clean and legible at all times. Call the Eastman Machine factory to order replacement labels.

Overview

The Robin is a light weight, 4 inch round knife machine with the power to cut heavy cloth and maneuverability to cut intricate patterns. It is available with a cool running Perma-Field motor in either 110 or 220 volts. The Robin's compact standard and thin base plate combine to reduce friction, letting it cut with ease through the heaviest of lays.

WARNING

The cutter is equipped with a very sharp knife. Failure to keep hands, arms and hair away from the knife area may result in serious personal injury.

Power Connection

CAUTION

Check to be sure the power supply is the same voltage rating as stamped on the nameplate.

Note: Voltage varying more than 10% (11v for 110 volt machine, 22v for 220 volt machine) may damage your electronics.

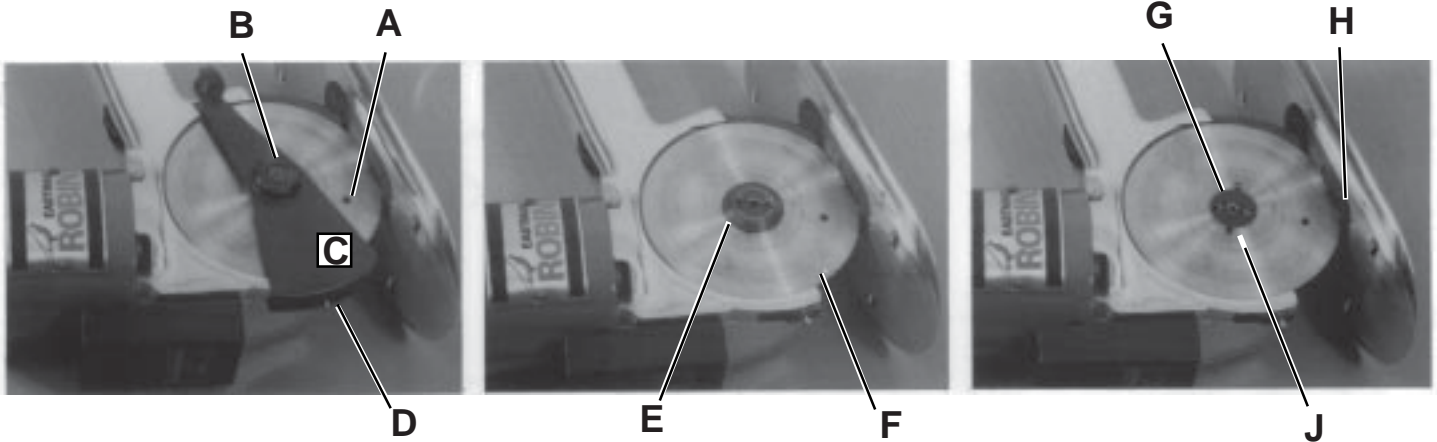
Maintenance

The Robin is designed to require only minimal maintenance for many years of trouble free service. The following information will aid in keeping your equipment running at its top efficiency.



WARNING

Before performing any of the following procedures, make sure that the attachment plug has been disconnected from the power source.



Knife Replacement

Lay the machine on its side, knife side up. Place a drift or screwdriver through the hole in the knife at about the position shown "A" to stop the knife rotating, while removing the knife bolt "B". Lift the knife guard "C" up slightly and at the same time sliding forward disengaging the pin "D" from front slot of knife guard. Remove flange cover "E".

Grasp knife "F" at open area and lift over knife flange "G", at the same time sliding knife up from under shear plate "H".

WARNING

The knife is very sharp. Failure to use proper precautions when handling may result in serious personal injury.

Replace with a new knife, beveled side down, carefully sliding under shear plate "H" and over knife flange "G". Be sure to align slots "J" in knife with the flanges "K" on knife hub, making sure knife is properly seated flush with the knife hub. Replace remaining parts in reverse order as they were removed. Double check all screws to be sure all parts are tightly secured.

Shear Plate Replacement

Remove knife blade (see knife replacement). From underside of base plate assembly, remove (2) two screws "K" holding in spring block "L". Lift out spring block and shear plate assembly. Separate shear plate "M" from spring block by removing (2) two screws "N". Replace with new shear plate and reassemble in reverse order.

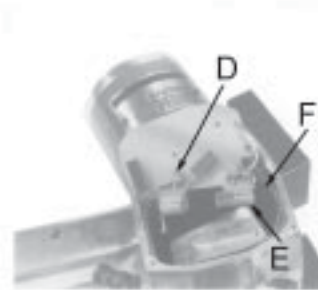
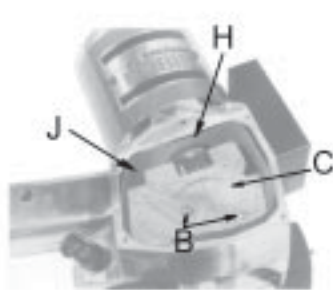
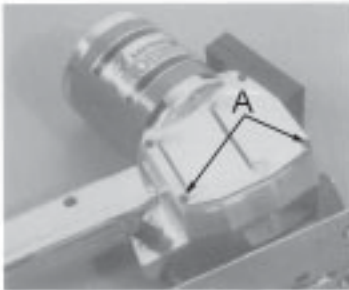
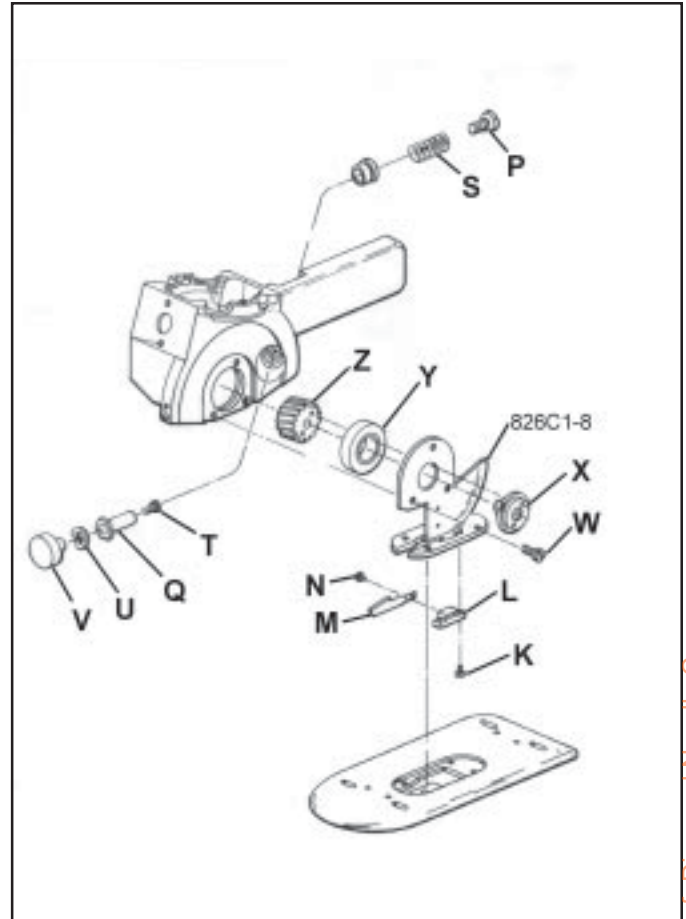
Knife Sharpening and Sharpener Replacement

To obtain a fine, keen edge on the blade, press lightly against the sharpener button "P" with a constant pressure while is running.

To replace sharpener stone, first remove knife blade (see knife replacement). Insert screwdriver into slotted head of sharpener button and hold hex bushing "Q" in place. Turn counterclockwise and remove sharpener button and spring "S". Set these parts aside for later reassembly. Remove screw "T" to separate hex bushing, spring washer "U" and emery wheel "V". Replace emery wheel and reassemble in reverse order.

Lubrication

Knife gear "Z" should be removed and packed with Eastman Lubriplate grease every three months. First remove knife blade (see knife replacement) to expose support plate assembly 826C1-8. Remove three (3) screws "W". Next, turn a 10-32 X 11/2 " long screw into the center of the knife flange "X". This screw will act as an extractor so that the gear, bearing, knife flange and base plate assembly can be removed as a unit. Continue turning screw until approximately 1/8" of thread is left exposed and lift out the assembly. Repack gear teeth only with grease. Remove extractor screw and reassemble in reverse order. BE careful to start seat bearing "Y" squarely during reassembly



Motor Brush Replacement

Remove (4) four screws "A" from cover plate. Lift off cover plate and cover insulation. Remove (2) screws "B" and carefully remove circuit board "C". Using care not to pull wires out, turn board over and loosen two screws "D" to remove motor brushes & pigtails.

Replace with new motor brushes, bevel corner at wire pigtail slides into brush holder "E" facing down, with wire coming out of slot "F" to fastener "D". Wrap pigtails around screw fasteners and tighten "D". Turn assembly over and, with your fingers, separate the brushes enough to fit over commutator bars "H" and at the same time working circuit board inside cavity insulation "J". Continue working assembly down until brushes snap into position and flat to inside standard.

Replace two screws "B" holding circuit board in position. Replace cover and cover insulation securing with four screws "A"

Switch Replacement

Remove (2) two screws 301C12-5 from right side handle 22C2-3 and separate right side handle from standard. Remove switch 580C1-109 and switch insulation 8C4-81. Replace with new switch and reassemble in reverse order. Make sure insulation is in place and undamaged before reassembling handle.

Level becomes unacceptable, the following procedures should be carried out before repairs are considered.

Eastman®

Over a Century of Cutting Expertise



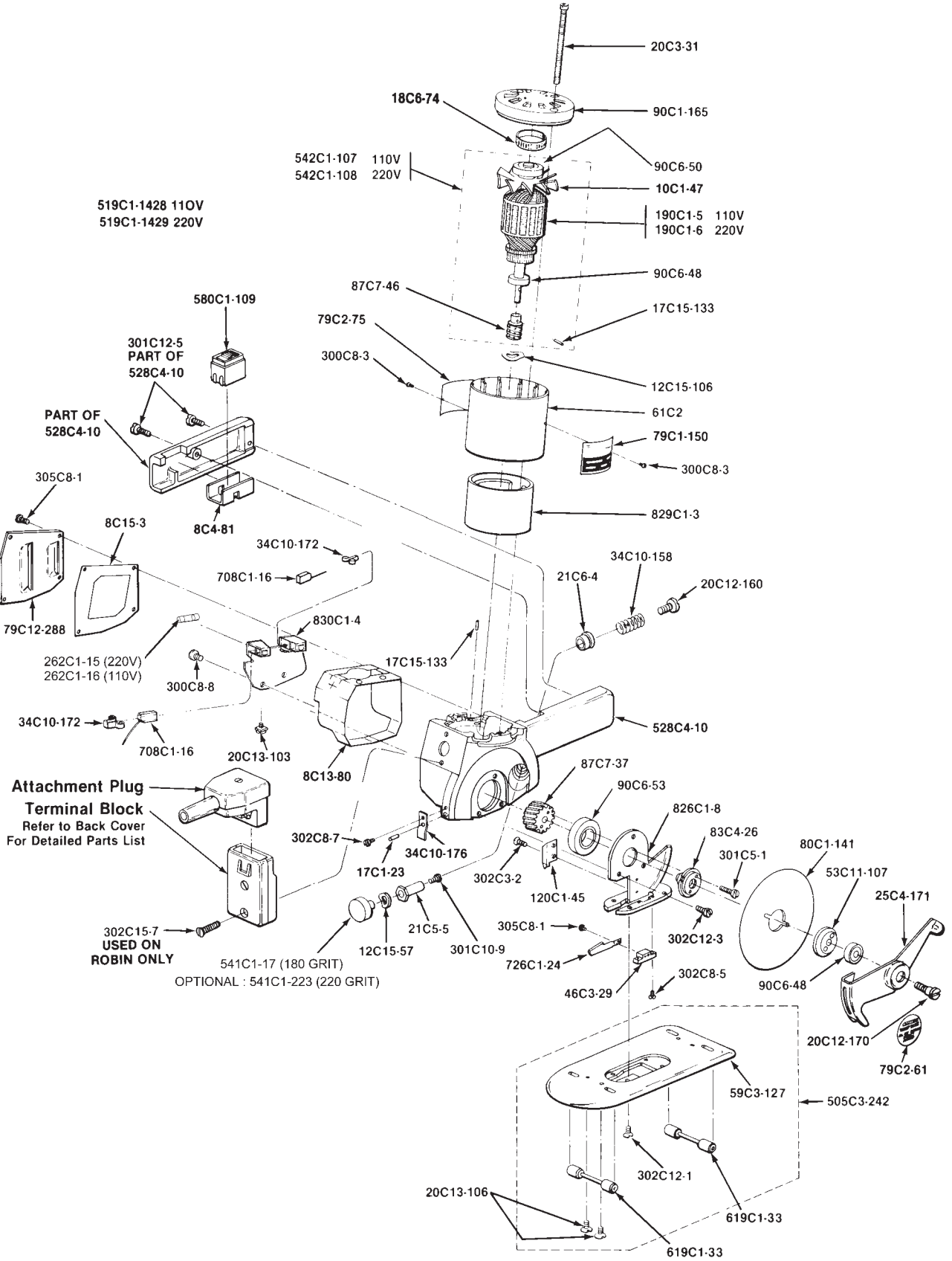
Illustrated Parts List



Part Number	No. Req'd.	Description
8C4-81	1	Switch Insulation
8C15-3	1	Cover Insulation
8C13-80	1	Cavity Insulation
10C1-47	1	Motor Fan
12C15-57	1	Spring Washer
12C15-106	1	Spring Washer
17C1-23	1	Dowel Pin
17C15-133	1	Roll Pin
18C6-74	1	Tolerance Ring
20C3-31	2	Tie Rod Screw
20C13-103	2	U-Lock Screw
20C12-160	1	Sharpener Screw
20C12-170	1	Knife Bolt
20C13-106	4	Alum #8-32 x 1/4 Flat. Hd.
21C5-5	1	Sharpener Bushing
21C6-4	1	Sharpener Bushing
25C4-171	1	Knife Guard
34C10-158	1	Sharpener Spring
34C10-172	2	Brush Spring
34C10-176	1	Spring for Guard
46C3-29	1	Knife Flange Cover
59C3-127	1	Base Plate
61C2	1	Motor Shell
79C1-150	1	Number Plate
79C2-61	1	Caution Label
79C2-75	1	Name Plate
79C12-288	1	Cover Plate
80C1-141	1	4 Inch Knife
83C4-26	1	Knife Flange
87C7-37	1	Knife Gear, 16 Tooth
90C1-165	1	Rear Bearing Housing
90C6-48	2	Ball Bearing
90C6-50	1	Ball Bearing
90C6-53	1	Ball Bearing
120C1-46	1	Plow
190C1-5	1	Armature 110
190C1-6	1	Armature 220V
262C1-15	1	Fuse, 1-1/2 Amp., (220v Only)
262C1-16	1	Fuse, 3 Amp., (110v Only)
300C8-3	4	Screw #4-40 x 1/8 Round Head
300C8-8	2	Screw #4-40 x 5/16 Round Head
301C5-1	2	Screw #3-48 x 3/4 Fillister Head
301C10-9	1	Screw #6-32 x 3/16 Fillister Head
301C12-5	2	Screw #8-32 x 5/8 Fillister Head
302C3-2	2	Screw #2-56 x 1/8 Flat Head
302C8-5	2	Screw #4-40 x 1/4 Flat Head
302C8-7	1	Screw #4-40 x 3/16 Flat Head
302C12-1	4	Screw #8-32 x 1/4 Flat Head
300C12-2	1	Screw #8-32 x 3/8 Round Head
302C12-3	3	Screw #8-32 x 3/8 Flat Head
302C15-7	2	Screw #10-32 x 1 Flat Head
305C8-1	6	Screw #4-40 x 1/4 Binding Head
505C3-242	1	Base Plate Assembly
528C4-10	1	Stand With Handle Assembly
541C1-17	1	Emery Wheel Assembly, 180 GRIT
541C1-23	1	Emery Wheel Assembly, 220 GRIT
542C1-107	1	Armature Assembly 110V
542C1-108	1	Armature Assembly 220V
580C1-109	1	Switch
619C1-33	2	Roller Shaft & Rollers Pin & Washers & Shell
708C1-16	2	Motor Brush
726C1-24	1	Shear Plate Assembly
826C1-8	1	Support Plate Assembly
829C1-3	1	Magnetic Ring Assembly
830C1-3	1	Circuit Board Assembly
830C1-4	1	Brush Card
830C1-31	1	Circuit Board Assembly

IMPORTANT: Always specify machine model and serial number when ordering parts for faster more efficient service.

From the library of: Diamond Needle Corp



**Attachment Plug
Terminal Block**
Refer to Back Cover
For Detailed Parts List

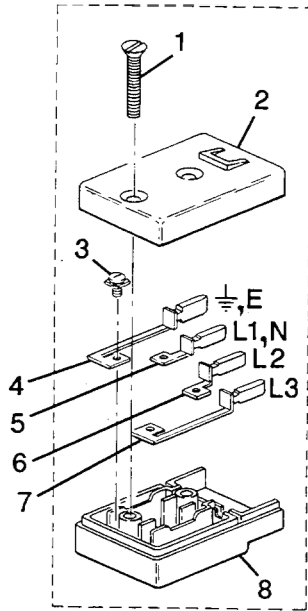
From the library of: Diamond Needle Corp

Eastman®

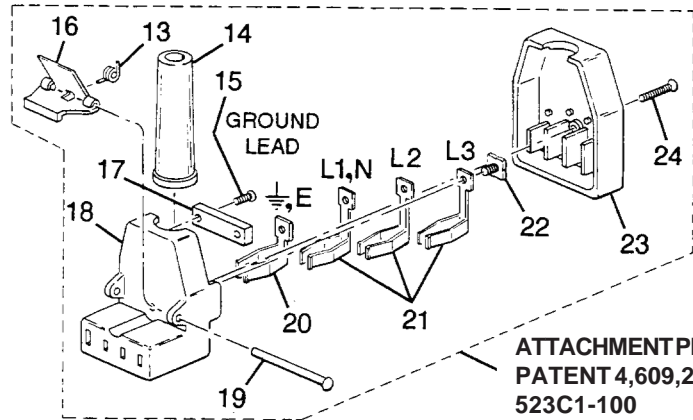
Over a Century of Cutting Expertise

Eastman®

Attachment Plug



TERMINAL BLOCK
PATENT 4,609,244
508C1-100
SHOWN



ATTACHMENT PLUG
PATENT 4,609,244
523C1-100
SHOWN



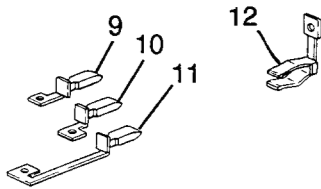
WARNING

Wiring Instructions

Eastman

Attachment Plugs

Electrical connections to this device should be made by a qualified electrician who is familiar with applicable codes and regulations. To ensure operators safety, a ground lead must be connected to terminal "E" on the attachment plug. Disconnect this equipment from electrical power before proceeding with any disassembly for adjustment, inspection or repair.



ITEM	PART NO.	DESCRIPTION
1	302C15-8	Screw, 10-32 x 1 1/8 Flat Hd.
2	-----	Terminal Block Top
3	20C13-103	U-Lock Screw
4	667C1-22	Terminal Contact w/Pin E
5	667C1-23	Terminal Contact w/pin L1, N
6	667C1-24	Terminal Contact w/Pin L2
7	667C1-25	Terminal Contact w/Pin L3
8	51C1-61	Terminal Block Bottom
9	667C1-26	Terminal Contact w/Pin L1, N
10	667C1-27	Terminal Contact w/Pin L2
11	667C1-28	Terminal Contact w/Pin L3
12	47C3-21	Terminal Sleeve (current)
13	34C10-170	Spring
14	1C13-27	Cord Sleeve
15	300C8-2	Screw, 4-40 x 1/2 Round Hd.
16	98C4-37	Thumb Clip
17	50C7-27	Cord Clamp
18	-----	Attachment Plug Body
19	91C4-22	Rivet
20	47C3-19	Terminal Sleeve
21	47C3-20	Terminal Sleeve (current)
22	20C13-103	U-Lock Screw
23	-----	Attachment Plug Cover
24	302C8-8	Screw, 4-40 x 7/8 Flat Hd.
25	-----	Terminal Block Complete
26	-----	Attachment Plug Complete

	EASTMAN 10A 380V 3~	EASTMAN 10A 220V 3~	EASTMAN 10A 220V ~	EASTMAN 15A 120V ~	EASTMAN 25A 42V ~
2	51C1-63	51C1-64	51C1-65	51C1-66	51C1-67
3	4	4	3	3	3
4	1	1	1	1	1
5	1	1	1	--	--
6	1	1	--	1	--
7	--	1	--	--	1
8	1	1	1	1	1
9	--	--	--	1	1
10	--	--	1	--	--
11	1	--	--	--	--
12	1	--	1	1	1
13	1	1	1	1	1
14	1	1	1	1	1
15	2	2	--	--	2
16	1	1	1	1	1
17	1	1	1	1	1
18	82C1-45	82C1-46	82C1-47	82C1-48	82C1-49
19	1	1	1	1	1
20	1	1	1	1	1
21	2	3	1	1	1
22	4	4	3	3	3
23	53C3-19	53C3-20	53C3-21	53C3-22	53C3-23
24	1	1	1	1	1
25	508C1-99	508C1-100	508C1-101	508C1-102	508C1-103
26	523C1-99	523C1-100	523C1-101	523C1-102	523C1-103

Eastman®

Over a Century of Cutting Expertise

779 Washington St., Buffalo, N.Y. 14203-1396 U.S.A. • (716)856-2200 • Fax (716)856-1140 or (716)856-2068

Manufacturers of Eastman Cloth Cutting and Cloth Spreading Machines

Website: www.EastmanCuts.com